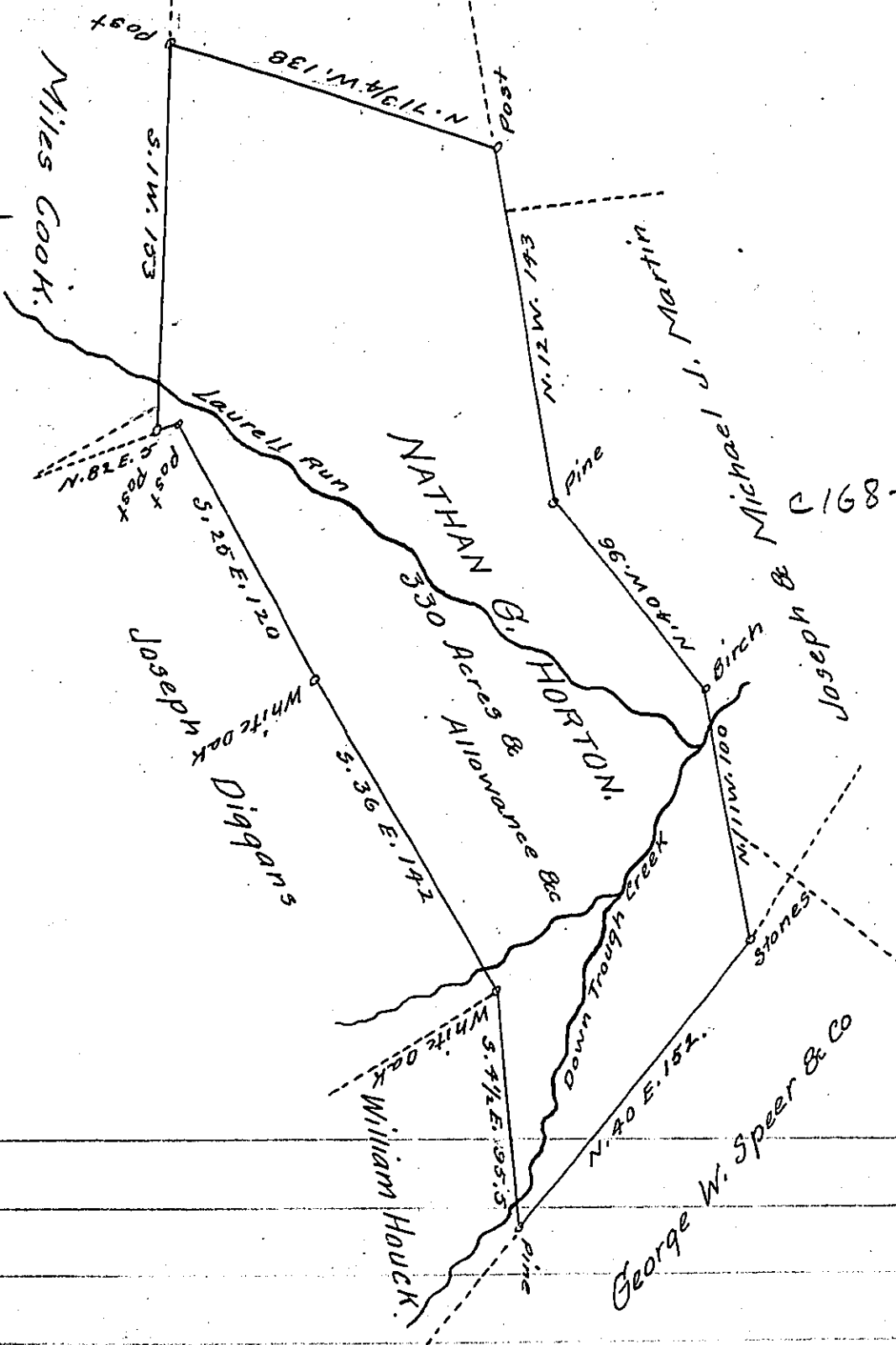


S-292

C52-134

C168-197



SITUATE on Trough Creek, Tod Township Huntingdon County Contain-  
 ing Three Hundred and Thirty Acres and allowance &c. Surveyed July  
 6<sup>th</sup> A.D. 1853, In pursuance of a Warrant granted to Nathan G. Horton  
 dated July 1<sup>st</sup> A.D. 1853 for 300 acres &c.

William Christy C.S.

To J. Porter Brawley Esq<sup>r</sup>  
 Surveyor General of Pennsylvania

IN TESTIMONY that the above is a copy of the original remaining on file in  
 the Department of Internal Affairs of Pennsylvania, made  
 conformably to an Act of Assembly approved the 16th day of  
 February, 1833, I have hereunto set my Hand and caused  
 the Seal of said Department to be affixed at Harrisburg,  
 this Tenth day of April 1905.

*Joseph R. [Signature]*  
 Secretary of Internal Affairs